



**47 Brownfield Gardens, Maidenhead, SL6 2RL**  
**£249,950**

 **HORLER**

## 47 Brownfield Gardens, Maidenhead, SL6 2RL

Situated within the highly sought-after Brownfield Gardens residential park in Maidenhead, this beautifully designed brand-new 40ft x 20ft park home offers an exceptional standard of contemporary living. Thoughtfully crafted with both style and comfort in mind, the property combines high-quality finishes with a spacious open-plan layout, perfectly suited to modern lifestyles.

The bright and airy living space seamlessly integrates the lounge, dining area and stylish fitted kitchen, creating an inviting environment ideal for both everyday living and entertaining. Finished to an excellent specification throughout, the kitchen offers sleek cabinetry and quality appliances, providing a practical yet elegant focal point to the home.

The accommodation comprises two generous double bedrooms, with the principal bedroom benefiting from a luxurious en-suite shower room. A second beautifully appointed bathroom serves the remainder of the property, ensuring both comfort and convenience for residents and guests alike.

Set within the peaceful surroundings of Brownfield Gardens, the home enjoys a welcoming community atmosphere while remaining within easy reach of local amenities, shopping facilities and excellent transport links. Offering contemporary design, superb craftsmanship and a low-maintenance lifestyle, this ready-to-move-into home presents an outstanding opportunity for those looking to enjoy modern park home living in a desirable Maidenhead location.



### **General Information**

Ground Rent - TBC

Council Tax Band 'A'

Family Park

### **Legal Note**

\*\*\*Although these particulars are thought to be materially correct their accuracy cannot be guaranteed and they do not form part of any contract\*\*\*.





# Brownfield Gardens SL6

Approximate Gross Internal Floor Area = 57.6 sq m / 621 sq ft

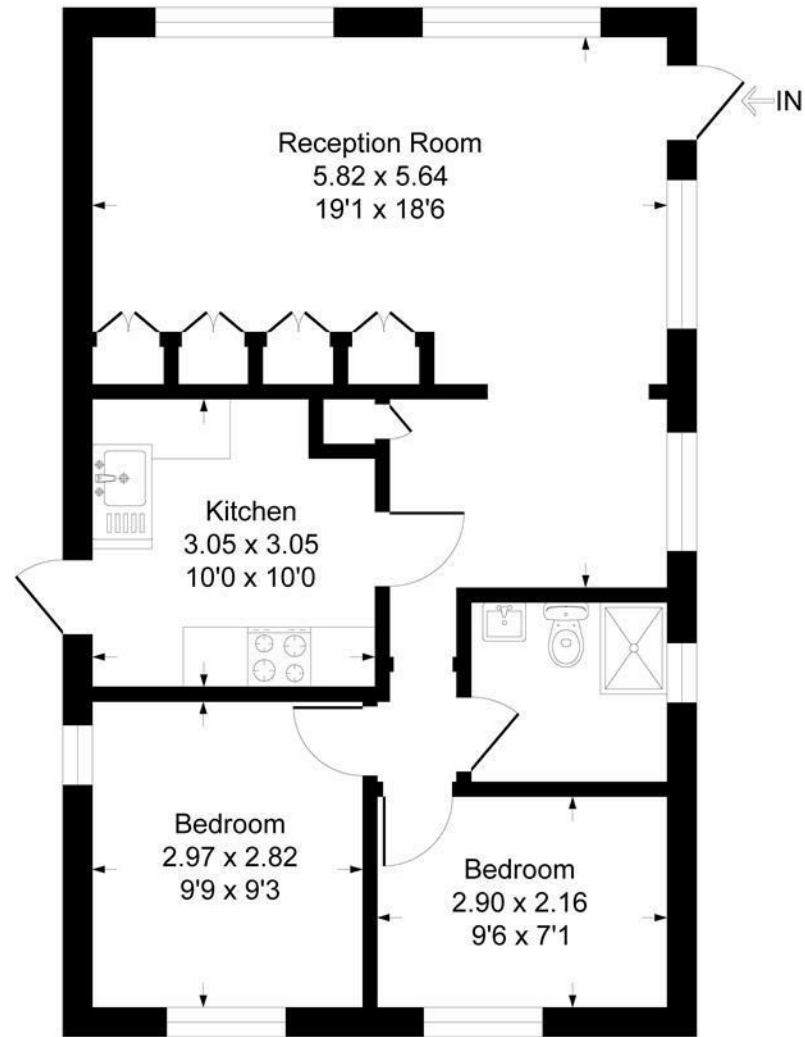


Illustration for identification purposes only, measurements are approximate, not to scale.  
Produced By Esjay Property Marketing